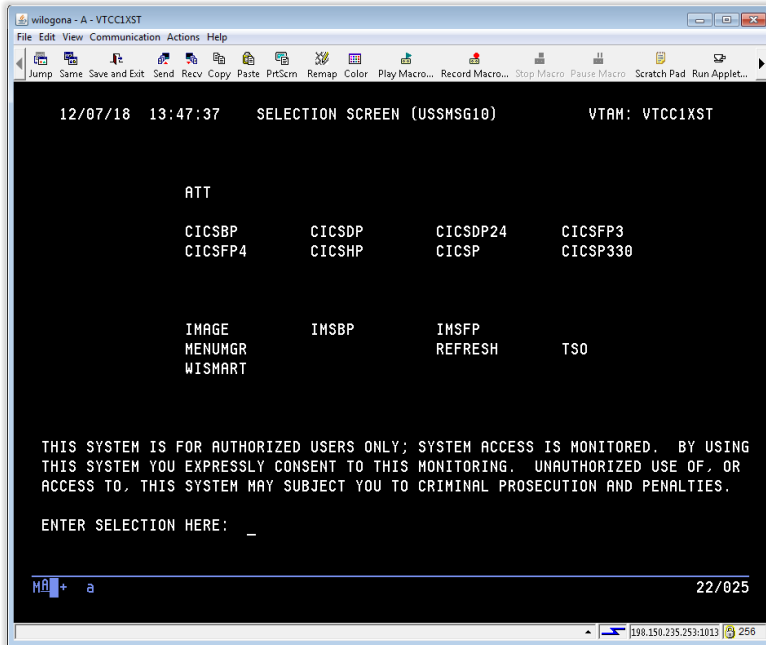


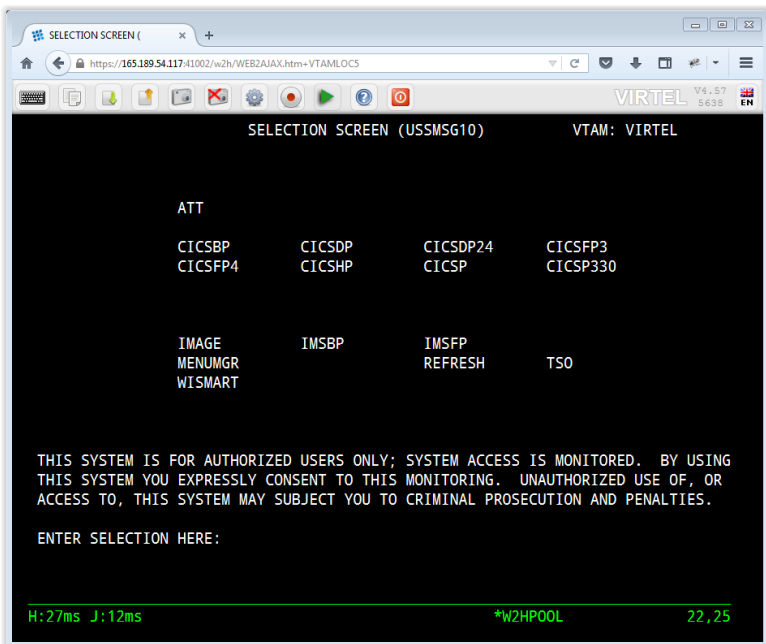
HOD vs Virtel – Screenshots for comparison

Screenshots from HOD and Virtel from a variety of mainframe subsystems and screens are below. Differences in appearance within the session window primarily are due to the difference in fonts and the window size as can be seen in the pictures.

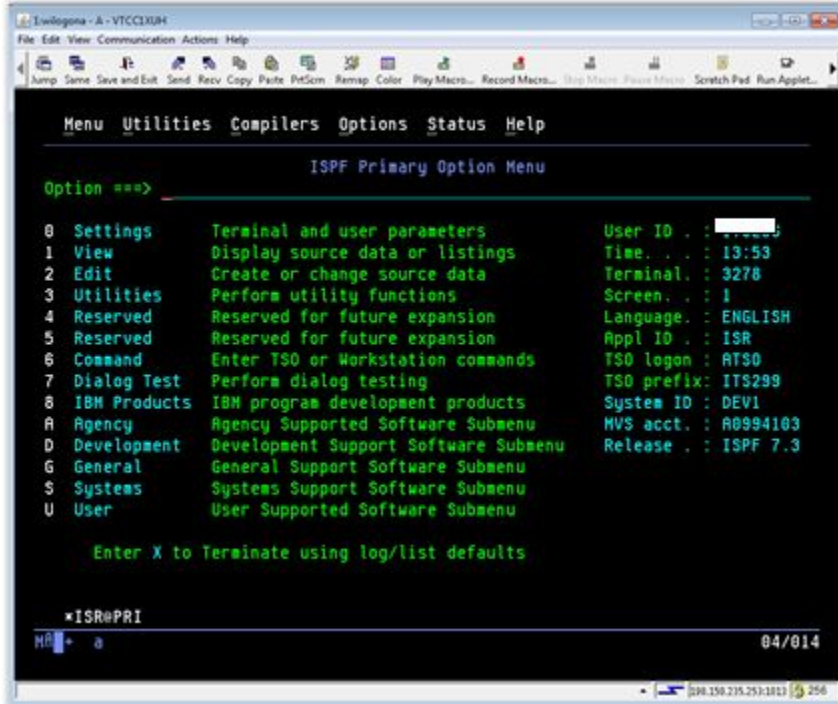
1a) HOD MSG 10



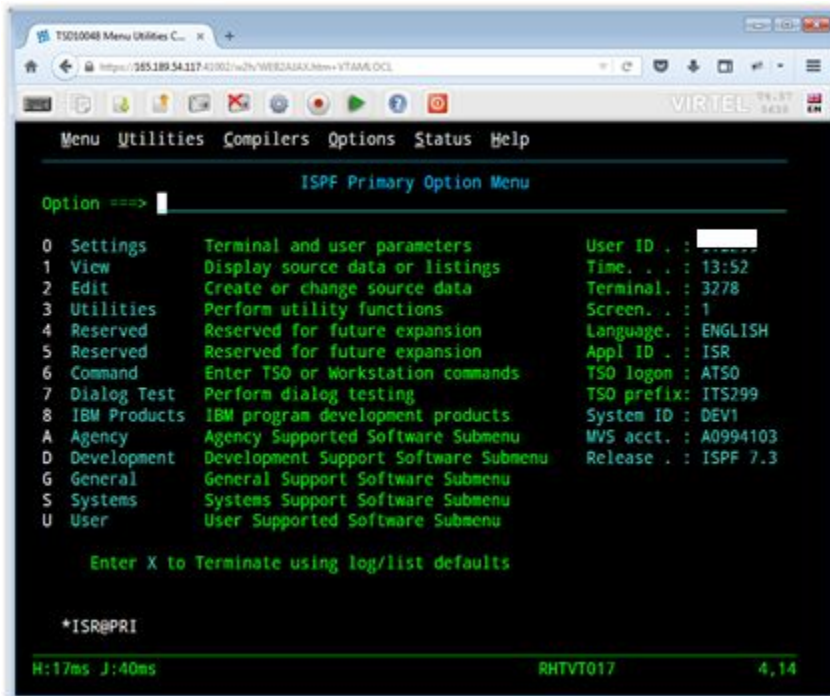
1b) Virtel MSG 10



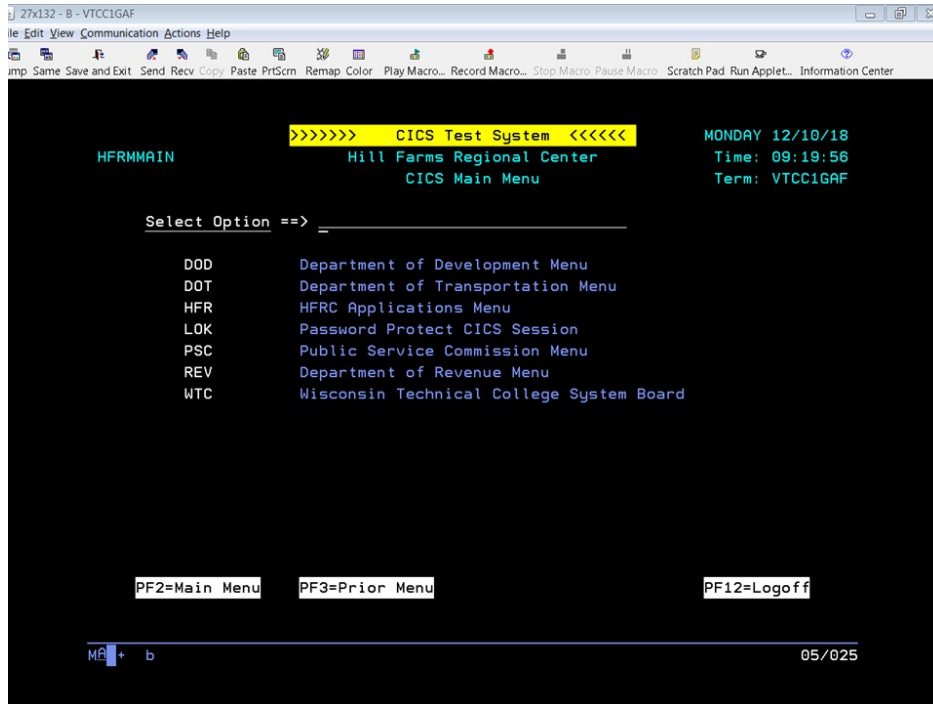
2a) HOD ISPF Primary Option Menu



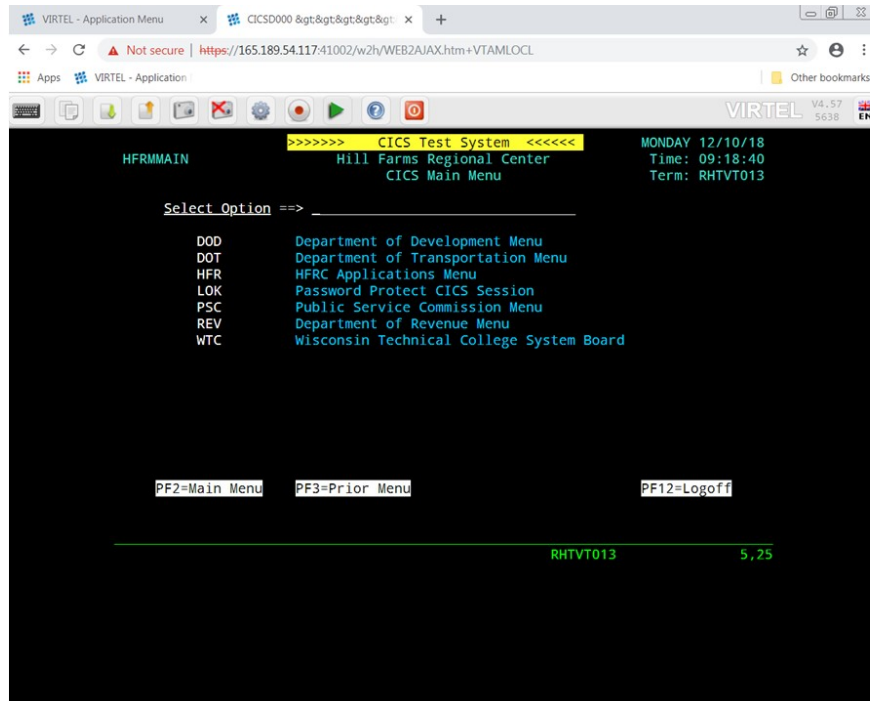
2b) Virtel ISPF Primary Option Menu



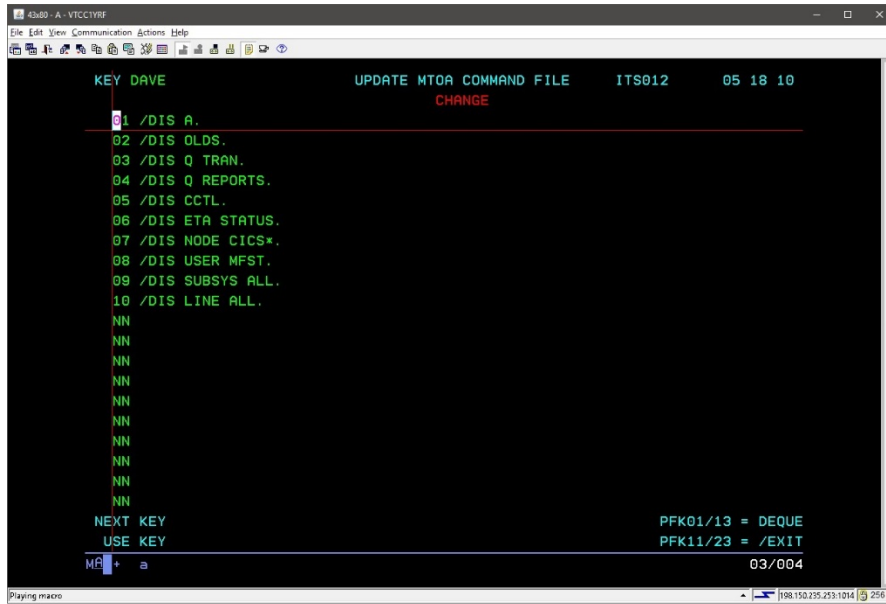
3a) HOD CICS



3b) Virtel CICS

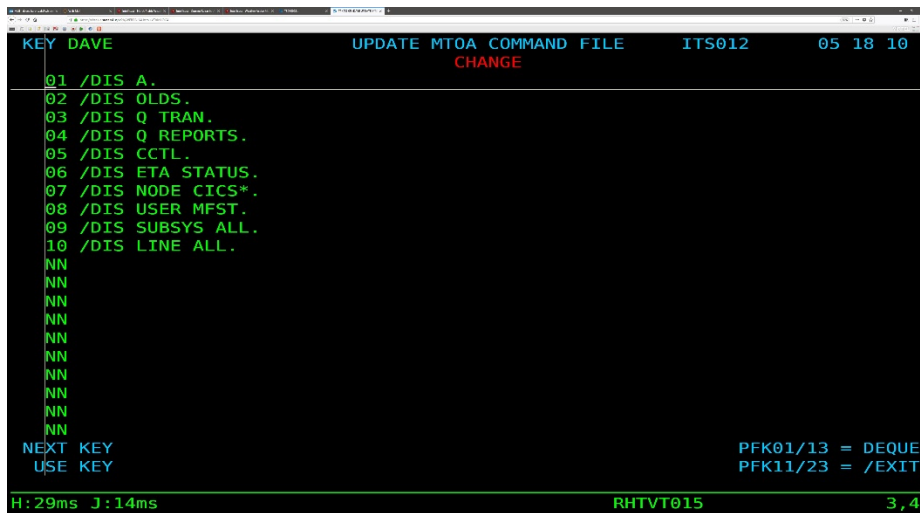


4a) HOD IMS



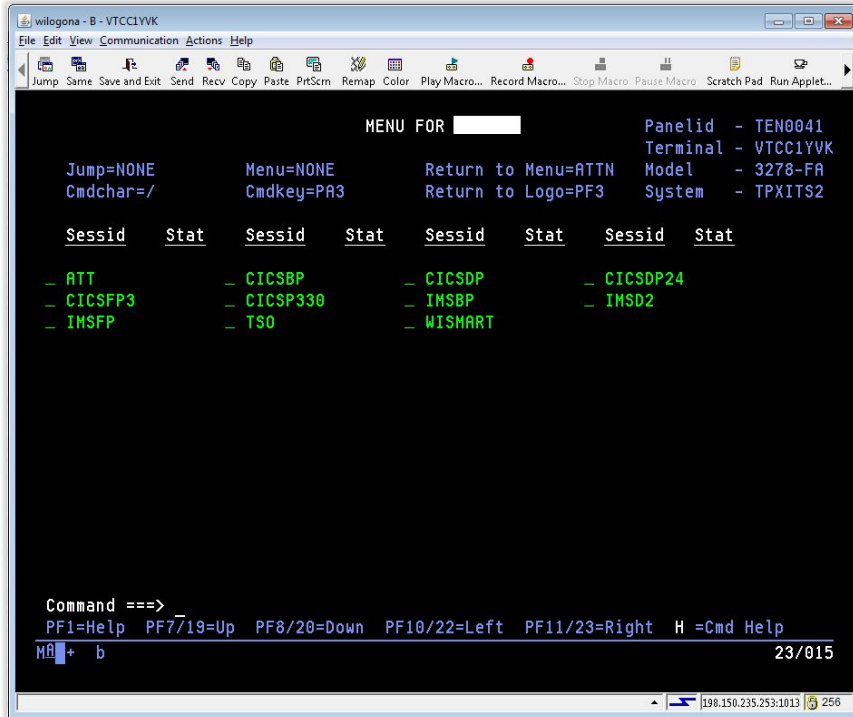
```
4a) HOD IMS
KEY DAVE          UPDATE MTOA COMMAND FILE   ITS012   05 18 10
                  CHANGE
01 /DIS A.
02 /DIS OLDS.
03 /DIS Q TRAN.
04 /DIS Q REPORTS.
05 /DIS CCTL.
06 /DIS ETA STATUS.
07 /DIS NODE CICS*.
08 /DIS USER MFST.
09 /DIS SUBSYS ALL.
10 /DIS LINE ALL.
NN
NN
NN
NN
NN
NN
NN
NN
NN
NN
NEXT KEY          PFK01/13 = DEQUE
USE KEY           PFK11/23 = /EXIT
MP a              03/004
Playing macros
```

4b) Virtel IMS



```
4b) Virtel IMS
KEY DAVE          UPDATE MTOA COMMAND FILE   ITS012   05 18 10
                  CHANGE
01 /DIS A.
02 /DIS OLDS.
03 /DIS Q TRAN.
04 /DIS Q REPORTS.
05 /DIS CCTL.
06 /DIS ETA STATUS.
07 /DIS NODE CICS*.
08 /DIS USER MFST.
09 /DIS SUBSYS ALL.
10 /DIS LINE ALL.
NN
NN
NN
NN
NN
NN
NN
NN
NN
NN
NEXT KEY          PFK01/13 = DEQUE
USE KEY           PFK11/23 = /EXIT
H: 29ms J: 14ms  RHTVT015 3,4
```

5a) HOD MenuMgr



5b) Virtel MenuMgr

